

A) KITHARA DOS-ENABLER 6.0

B) Screen Mode Configuration Notice for PCSPRO / LCAPRO „No Mouse Support“

A) KITHARA DOS – ENABLER 6.0

The »DOS Enabler« supports the following Windows-Operating Systems:

- Windows NT 4.0
- Windows 2000



First you have to uninstall **older Kithara-Versions** (5.xx) !

Generell procedure:

- **Disable** Dos-Enabler 5.xx:

Settings → Control Panel → »Kithara Control Center« → register-sheet »Options«
→ disable» Use virtual 16 bit device drive « → Accept → Reset Kernel

- **Uninstall** Dos-Enabler 5.xx
- Reboot your System
- Install Version 6.00
- Configurations , see „1)“

1)

First you have to configure your Kithara » Control Center « to run the » DOS Enabler « for special 16-Bit-Application like PCSPRO.

Important is the register » DOS Enabler « with register-sheet » I / O Ports « to configure your individual port access. The lower area manages the combining of the chosen application with the resources that you release.

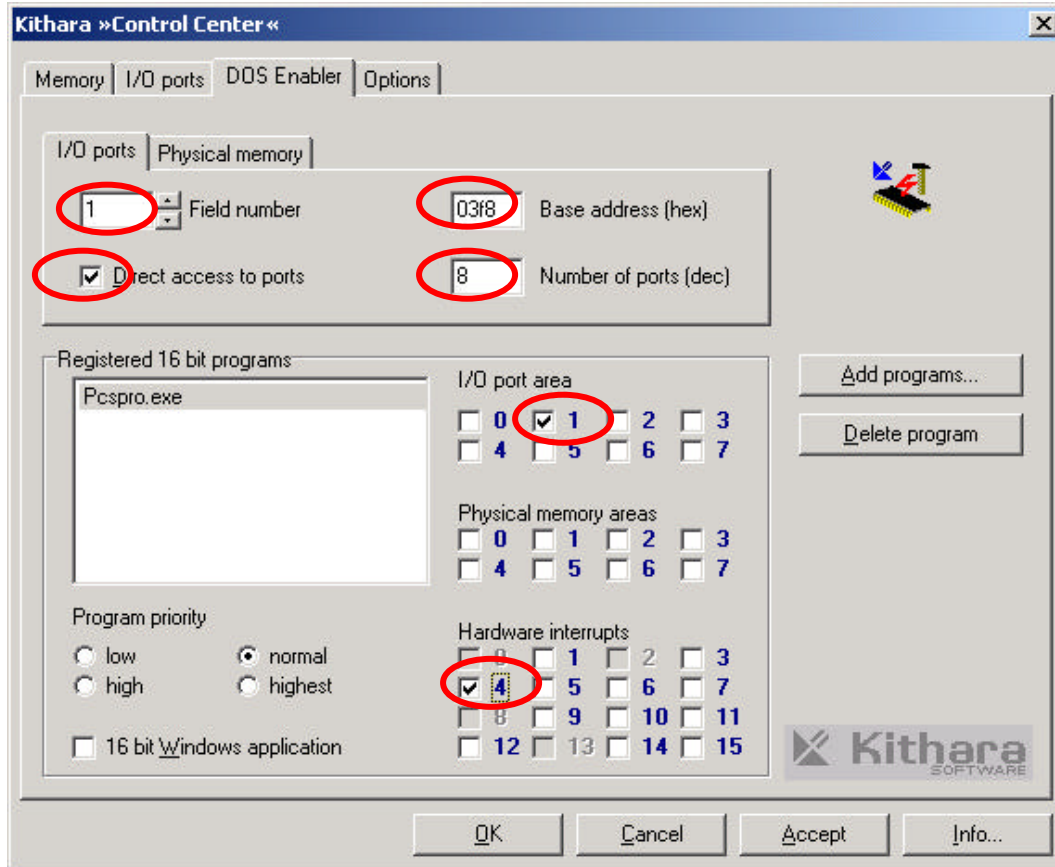
(Settings → Control Panel → »Kithara Control Center« → Register-sheet »DOS Enabler«)

2)

Following you will see 2 Screen-Shots where the configurations are explained step by step

**These Settings are based on the standard parameters of COM1 – Interface
(Base address 03f8, Interrupt 4)**

Settings:



With the „ Add programs “ it is possible to add the *.exe of the software that you have chosen.

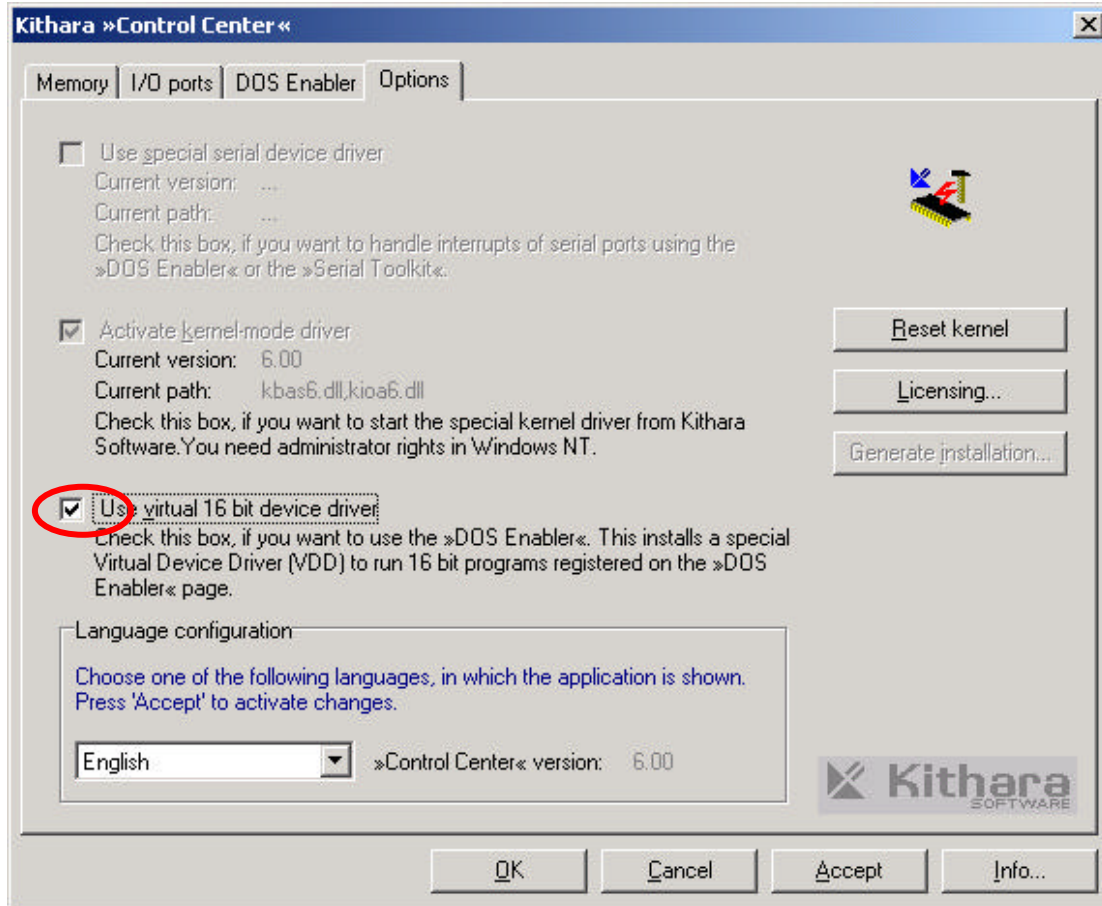


Every additional Application that you want to insert needs to be configured again :
I/O-Port area (= 1) and Hardware-Interrupts (4 / COM1) !

3)

Go to register-sheet »Options«

Settings:



After registration of the application programs like PCSPRO you have to activate the »DOS Enabler«

- ➔ activate » Use virtual 16 bit device drive «
- ➔ Accept and leave with OK

Here it is possible to inactivate your »DOS Enabler« if needed.
If the »DOS Enabler« is active it will be loaded when you start your registered 16-Bit-Application

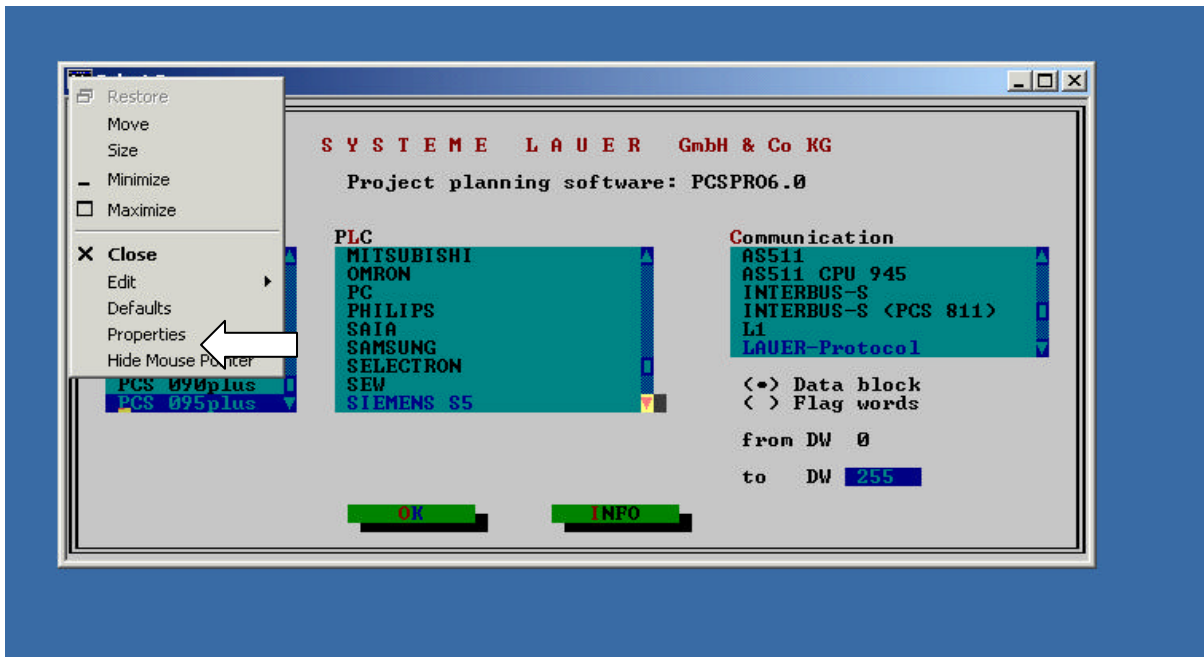


Finally restart your system

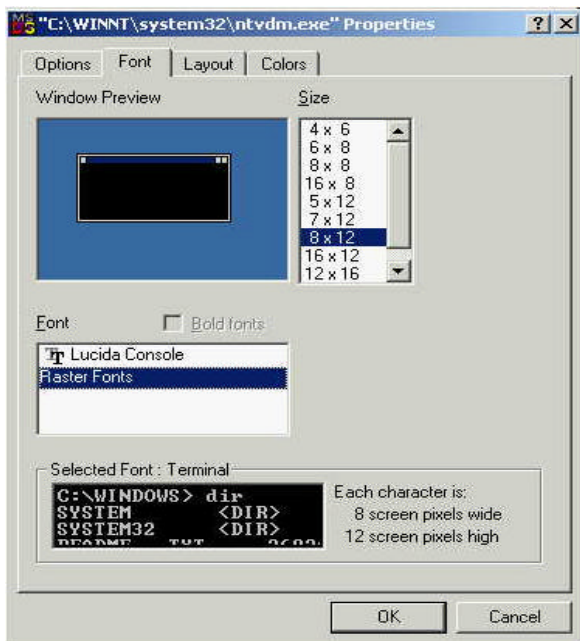
B) Screen Mode Configuration Notice for PCSPRO / LCAPRO

Basically it is important to run PCSPRO / LCAPRO in the Full Screen Mode if you want to have a guaranteed functionality . The following configurations are made for PCSPRO Software, but there are the same configurations for LCAPRO Software.

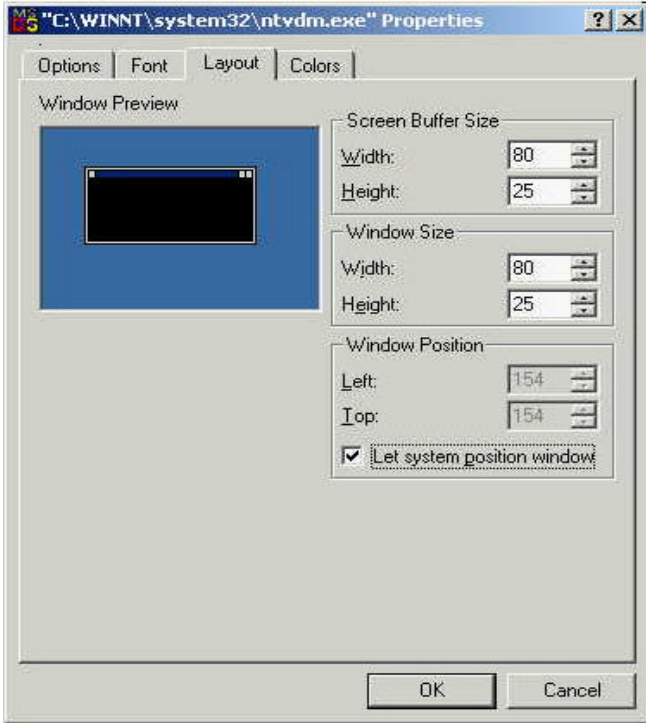
- ➔ Start PCSPRO in the Window mode
- ➔ Properties



Control your font ➔ Raster Fonts 8 x 12

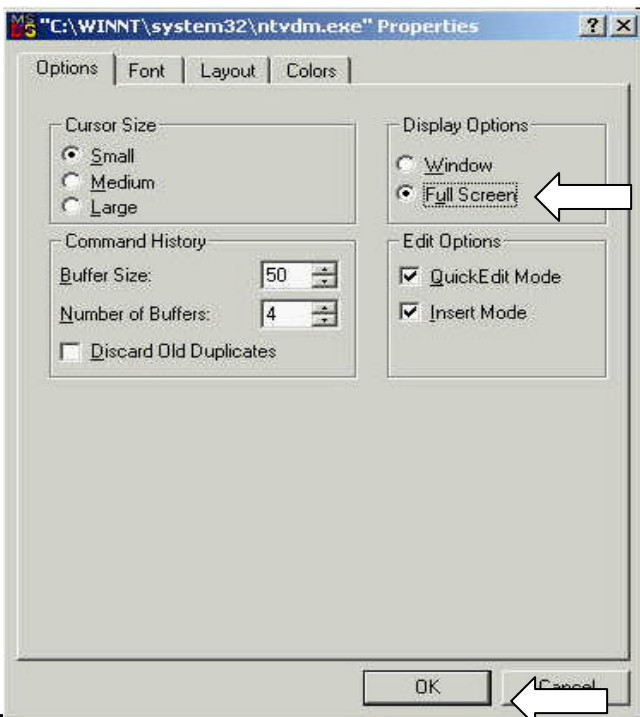


Layoutproperties :



These configurations are important : → Width : 80 / Height : 25 for Screen Buffer Size and for the Windows Size.

Options → Full Screen Mode



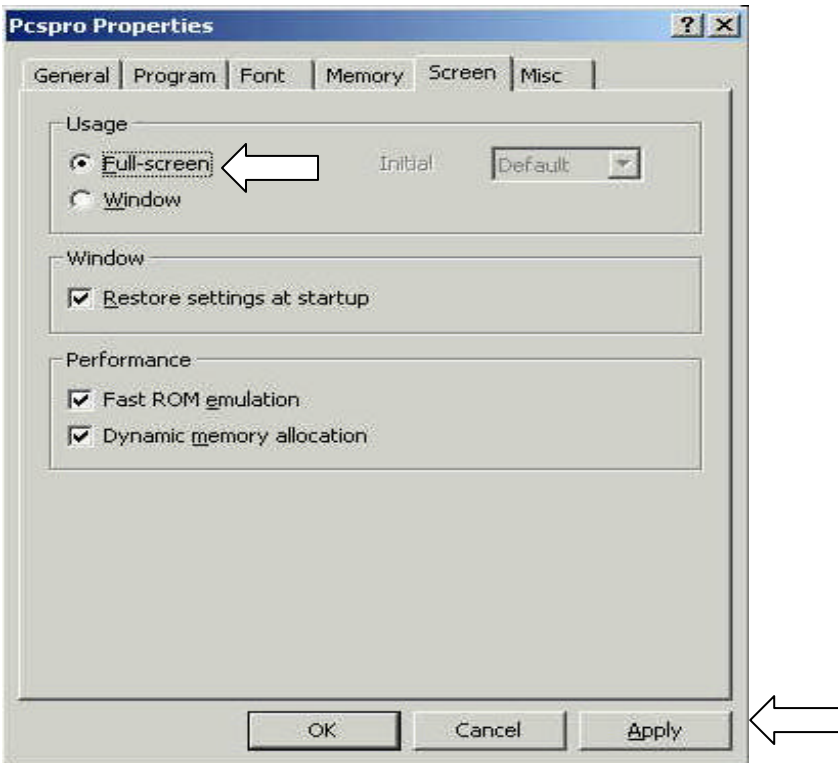
→ After confirmation with OK you will see the following dialog :



After all these Configurations, the PCSPRO will start at first in the wrong screen mode
→ Confirm with OK
→ Close the application with ALT-X

At last you have to change the properties of the PCSPRO.EXE (Don't start the PCSPRO)

- PCSPRO.EXE (ICON on DESKTOP)
- Properties (click right mouse button)
- Screen : Usage with Full-screen



Reboot your System → O.K.

Erstelldatum: 20.12.2001 15:29

Seite 7 von 7

Ersteller: BAUMEISTER

kithara6_configuration

© by Systeme Lauer GmbH & Co. KG • reg 10445/1101 Print02/1101