

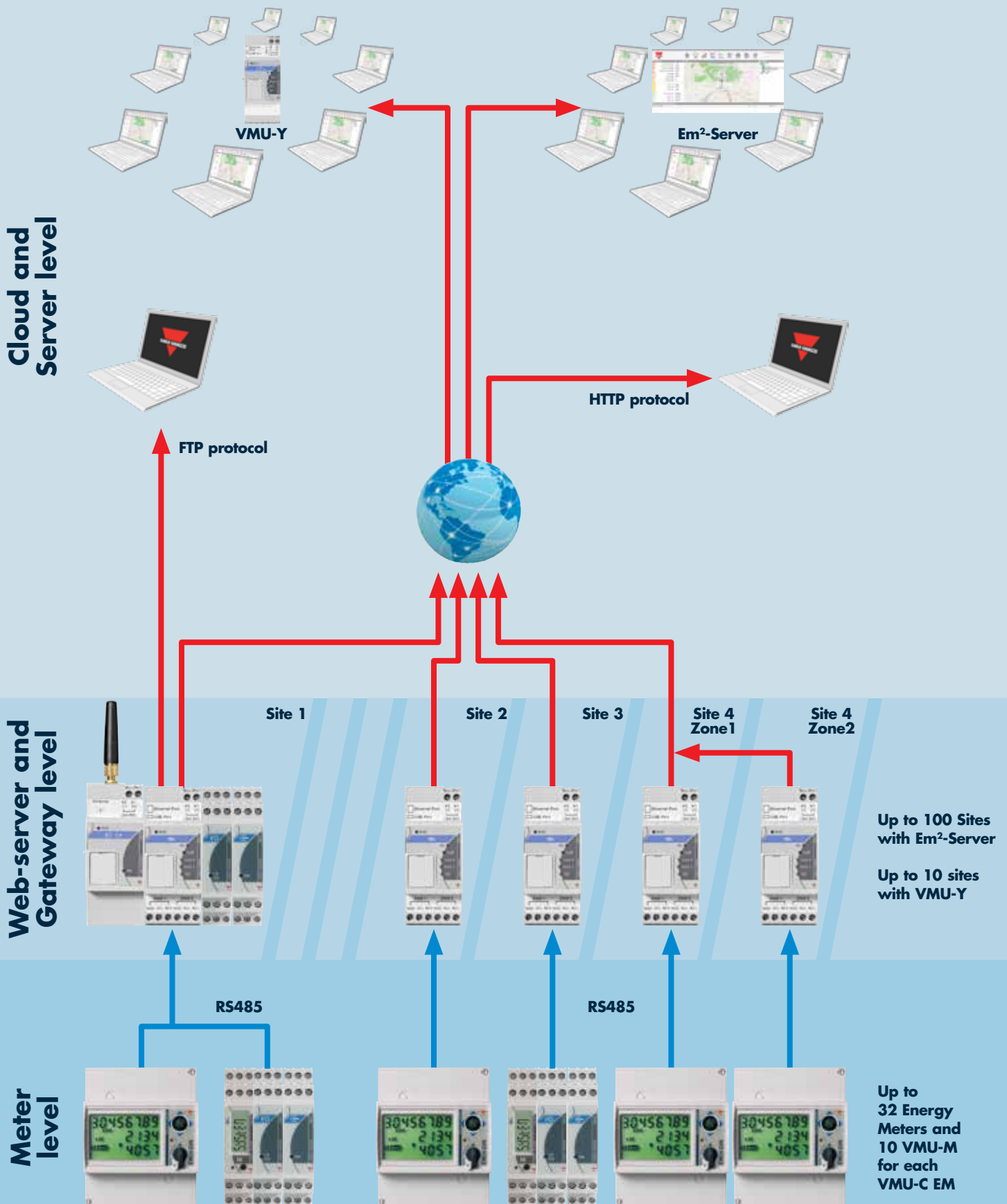


Overview

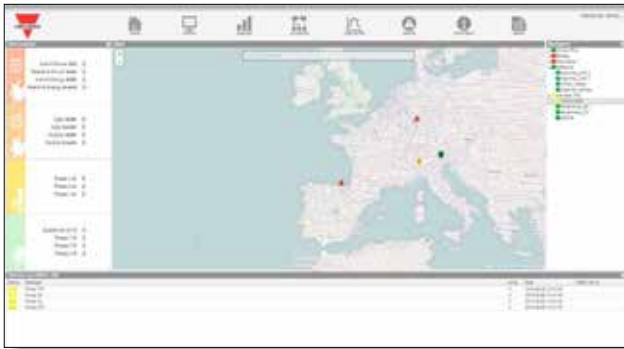
Energy Management

Overview

The diagrams

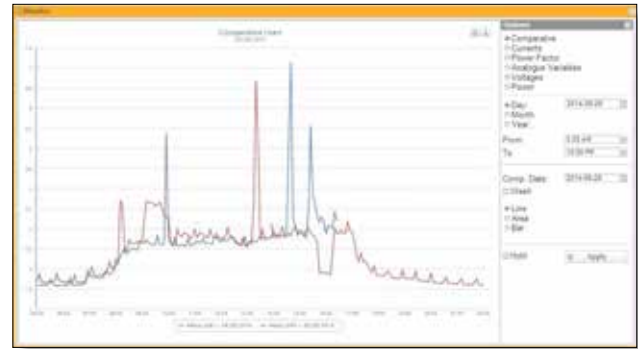


Em²-Server: Cloud solution for multi-site monitoring



Home page

- Integrated MAP view
- Hierarchical tree to navigate data with ease
- Movable and resizable views fitting the needs of a control room



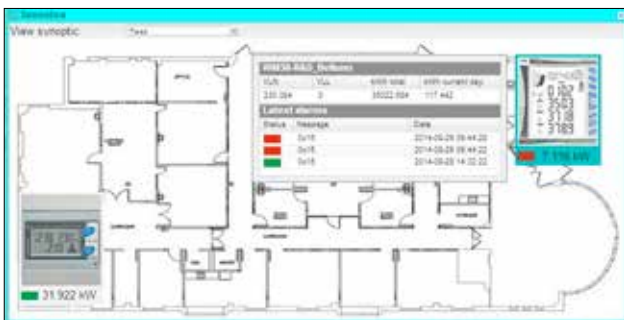
Monitoring and analysis tool

- Historical data analysis tools
- Graphical monitoring features
- Comprehensive data exporting tools (standard XLS format)



Login page

- Multilingual web based user interface
- User rights management
- Concurrent data access from multiple locations



Synoptics tool

- User defined background
- Active iconized energy meters showing real time variables and status
- Multiple Synoptic views may be created



Load profile tool

- Load profile statistical analysis based on actual data
- Profiles may be exported as Excel files or represented as charts
- Calculation of average, median, maximum and statistical confidence range

Overview

Energy management

Wound primary CT	CT for cable or bus-bar	CT for cable or bus-bar	CT for cable or bus-bar	CT for cable or bus-bar
------------------	-------------------------	-------------------------	-------------------------	-------------------------



TADK/TADK-2

- Wound primary
- Primaries: 1A to 40A (TADK)
1A to 250A (TADK-2)
- Secondary: 5A (standard)
1A (available upon request)
- Sealable terminal covers
- CE



CTD-1X/2X/3X/4X

- For cable or bus-bar
- Cable: Ø23mm to Ø51mm
- Bar: 20x5mm to 64x20mm or 51x43mm
- Sealable terminal covers
- Primaries from 50A to 1600A
- Secondary: 5A (standard)
1A (available upon request)
- IEC60044-1
- CE, cURus



CTD-5S/6S

- Split-core for cable or bus-bar
- Cable: Ø26mm to Ø50mm
- Bar: 26x32mm, 50x52mm
- Sealable terminal covers
- Primaries from 100A to 1000A
- Secondary: 5A (standard)
1A (available upon request)
- IEC60044-1
- CE, cURus



CTD-8/9/10/11 S,V,H,Q

- Solid or split-core for cable or bus-bar
- Bar: 31x81mm (vertical), 81x31mm (horizontal) to 38x127mm
- Sealable terminal covers
- Primaries 150A to 4000A
- Secondary: 5A (standard)
1A (available upon request)
- IEC60044-1
- CE, cURus



CTV-1X/ 2X/ 3X/ 4X

- Split-core current sensor for cable
- Cable: Ø9.6mm to 20mm
- Primaries from 60A to 400A
- Secondary: 0.333VAC
- CE, cURus

3-phase multi function meters	3-phase multi function meters	3-phase energy analyser for retro-fit	3-phase energy analyser for 5A CT
-------------------------------	-------------------------------	---------------------------------------	-----------------------------------



WM10

- 3-phase multifunction meter with direct connection
- Direct connection up to 65 A
- Dimension 4-DIN rail module housings
- Accuracy 0.5%
- Display 3 variables at a time
- Direct measurement in a very compact housing to save space
- Measurement of both system and single phase variables
- Easy installation: no parameters programming needed



**WM12DIN/WM14DIN
WM1296/WM1496**

- Dimensions: 6 DIN modules or 96x96mm
- Installation: DIN-rail or panel mounting
- 3 red LED displays
- Measurement of voltage, current, power, power factor and frequency, energy (WM14)
- Energy metering, 9 digits, cl. 2
- Measuring inputs: 230VAC, 5A
- Power supply: 90-260VDC/AC
- Pulse or relay outputs
- RS485 Modbus
- CE, cULus



**EM21 72R
EM21 72V**

- Dimensions: 4 DIN modules or 72x72mm
- Installation: DIN-rail or panel mounting
- LCD with two installation options.
- Measurement of voltage, current, power, power factor and frequency
- 7-digit energy metering, EM21 72R: cl. 2 (EN62053-21), EM21 72V: cl. 1 (EN62053-21)
- Voltage inputs: 3x230(400)VAC split-core current sensors: 90A, Ø10mm (VV23), 150A Ø16mm (VV33), 250A Ø24mm (VV53) EM21 72V: 0.333mV from CTV-xX sensors
- Self-powered
- Pulse outputs, RS485 Modbus RTU
- CE, cULus



EM210

- Dimensions: 4 DIN modules or 72x72mm
- Installation: DIN-rail or panel mounting
- Two instrument formats in a single product: LCD with two installation options
- Measurement of voltage, current, power, power factor and frequency
- Bi-directional energy metering on 2 8-digit counters, cl. B (EN50470)
- Self-powered
- Pulse output 1
- RS485 Modbus RTU, high speed (up to 115kbps)
- Sealable terminal covers
- CE, cULus

Energy management

1-phase energy meter/ analyser up to 45A



EM110/EM111

- Dimensions: 1 DIN module
- Installation: DIN-rail
- Electromechanical counter (EM110) or backlit LCD (EM111)
- Measurement of voltage, current, power, power factor and frequency with touch display (EM111)
- Bi-directional energy metering, cl. B (EN50470)
- Measuring inputs: 230VAC, 45A
- Self-powered
- Pulse output or as an alternative (EM111): RS485 Modbus, M-Bus
- Sealable terminal covers
- CE, cULus

1-phase energy meter/ analyser up to 100A



EM112

- Dimensions: 2 DIN modules
- Installation: DIN-rail
- Backlit touch LCD
- Display backup by supercapacitor
- Measurement of voltage, current, power, power factor and frequency
- Measuring inputs: 230VAC, 100A
- Self-powered
- Bi-directional energy metering, 8 digits, cl. B (EN50470)
- Pulse output or as an alternative: RS485 Modbus, M-Bus
- Sealable terminal covers
- CE, cULus

3-phase energy analyser for 5A CT



EM330

- Dimensions: 2 DIN modules
- Installation: DIN-rail
- Backlit touch LCD
- Measurement of voltage, current, power, power factor and frequency
- Bi-directional energy metering on 2 8-digit counters, cl. B (EN50470)
- Measuring inputs: 3x230(400)VAC, 5A
- Power supply: 12-60VAC/DC or 90-260VAC/DC
- Inputs: 1 for double tariff system setting
- Pulse output or as an alternative: RS485 Modbus or M-Bus
- Sealable terminal covers
- CE, cULus

3-phase energy/analyser for direct current up to 65A



EM340

- Dimensions: 3 DIN modules
- Installation: DIN-rail
- Backlit touch LCD
- Measurement of voltage, current, power, power factor and frequency
- Bi-directional energy metering on 2 8-digit counters, cl. B (EN50470)
- Measuring inputs: 3x230(400)VAC, 65A
- Self-powered
- Inputs: 1 for double tariff system setting
- Pulse output or as an alternative: RS485 Modbus or M-Bus
- Sealable terminal covers
- CE, cULus

3-phase energy analyser



EM24

- Dimensions: 4 DIN modules
- Installation: DIN-rail
- Meter for energy from CT 5A or for direct energy 65A. External pulse counting
- Measurement of voltage, current, power, power factor and frequency. Metering from external sources and 4-tariff management
- Bi-directional energy metering on 2 8-digit counters, cl. B (EN50470-3)
- Voltage inputs: 3x230(400)VAC
- Current inputs: 5A, 65A
- 115-230VAC power supply or self-powered
- 3 inputs for external dimension counting (IS)
- Pulse or relay output: RS485 Modbus RTU, M-Bus
- Sealable terminal covers
- CE, MID (PF), cULus

3-phase energy meters



EM23 / EM33

- 3-phase energy meter with direct connection
- Direct connection up to 32A (EM33) or 65A (EM23)
- Dimensions: 4-DIN rail module housings
- Class 1 (kWh) acc. to EN62053-1
- Serial RS485 or open collector (EM23) output

3-phase power quality analysers/transducers



WM5

- Dimensions: 96x96mm panel;
- Accuracy 0.2% (voltage, current)
- Universal power supply
- Front protection degree IP65, NEMA4X, NEMA12
- cULus approved, Measurement Canada certified
- 16-alarm PLC logic, digital inputs for utility metering, 12 tariffs, event data stamping
- Modular housing to build the instrument according to the real application needs
- Modbus RS485 and Ethernet communication ports available

3-phase energy analyser



EM26

- Dimensions: 96x96mm
- Installation: panel mounting
- Energy meter, metering from external inputs, THD measurement.
- Measurement of voltage, current, power, power factor and frequency. Metering from external sources and 4-tariff management
- Bi-directional energy metering on 2 8-digit counters, cl. B (EN50470-3)
- Voltage inputs: 3x230 or 3x100(400)V
- Current inputs: 5A
- Power supply 90-260VDC/AC
- 3 inputs for external dimension counting (IS)
- RS485 Modbus RTU, pulse or relay
- Sealable terminal covers
- CE, MID (PF), cULus

Energy management

Double 3-phase (or six 1-phase) energy meter

3-phase CT for EM270 for cable or bus-bar

Double 3-phase (or six 1-phase) energy meter

Multiple miniature split-core current sensor for EM271



EM270

- Dimensions: 4 DIN modules or 72x72mm
- Installation: DIN-rail or panel mounting
- Meter with specific three-phase TCD CT
- Quick installation through RJ connectors
- Automatic recognition of CT ratios
- Measurement of voltage, current, power, power factor and frequency, energy metering, cl. 1.
- Inputs: 3x230(440)VAC, 150A(TCD-1X), 250A (TCD-2X), 630A (TCD-3X).
- Outputs: 2 pulse (meter 1 and 2)
- RS485 Modbus RTU
- CE



TCD-1X/TCD-2X/TCD-3X

- Dimensions (LxHxP)mm:
TCD-1X: 74.84x72x66.80
TCD-2X: 105x72x50
TCD-3X: 135x78x50
- Bus-bar sizes (mm):
TCD-1X: 15.90x30.48
TCD-2X: 21.26x25.26
TCD-3X: 31.25x31.25
- Centre-to-centre distance (mm):
TCD-1X: 25
TCD-2X: 35
TCD-3X: 45
- Primary:
TCD-1X: 160A
TCD-2X: 250A
TCD-3X: 630A
- CE



EM271

- Dimensions: 4 DIN modules or 72x72mm
- Installation: DIN-rail or panel mounting
- Meter with specific three-phase TCD CT
- Quick installation through RJ connectors
- Automatic recognition of CT ratios
- Measurement of voltage, current, power, power factor and frequency, energy metering, cl. 1
- Inputs: 3x230 (440)VAC, 150A (TCD-1X), 250A (TCD-2X), 630A (TCD-3X)
- Outputs: 2 pulse (meter 1 and 2)
- RS485 Modbus RTU
- CE



TCD_M

- Equivalent to Class 1 (currents) of EN60044-1
- Primary: 60A (TCD0M), 100A (TCD1M), 200A (TCD2M), 400A (TCD3M)
- Hole size: 9.6mm (TCD0M), 15.5mm (TCD1M), 15.5mm (TCD2M), 20.5mm (TCD3M)
- Cable length: 1.8m (TCD0M), 1.5m (TCD1M and TCD2M), 2.0m (TCD3M)
- Auto-detection of the primary current rated value by the EM271 energy meter
- TCD_M head for wall and DIN-rail mounting
- Umbilical connection (80cm) from TCD_M head to EM271 energy meter through RJ11

3-phase power quality analysers

3-phase power quality analysers

3-phase Smart modular power transducer

3-phase power transducer



WM30

- Dimensions: 96x96mm panel mounting housing
- Accuracy 0.2% (voltage, current)
- Universal power supply
- Front protection degree IP65, NEMA4X, NEMA12
- cULus approved; Solar California listed
- Provides installation data to a SCADA to manage the whole system
- Modular housing to build the instrument according to the real application needs
- Modbus and BACnet (both RS485 or Ethernet), and Ethernet/IP communication port available



WM40

- Dimensions: 96x96mm panel mounting housing
- Accuracy 0.2% (voltage, current)
- Universal power supply
- Front protection degree IP65, NEMA4X, NEMA12
- cULus approved; Solar California listed
- 16-alarm PLC logic and digital inputs for utility metering
- Modular housing to build the instrument according to the real application needs
- Modbus and BACnet (both RS485 or Ethernet), and Ethernet/IP communication port available
- Built-in datalogger for instantaneous variables, dmd profiles and events



PQT-H

- Dimensions 90x90mm DIN rail housing
- Accuracy 0.2% (voltage, current)
- Universal power supply
- Event data stamping and 12-tariff energy management
- cULus approved
- 16-alarm PLC logic and digital inputs for utility metering
- Modular housing to build the instrument according to the real application needs
- Modbus RS485 and Ethernet communication ports available



CPT-DIN

- Dimensions: 45x83.5x98.5mm
- Installation: DIN-rail
- Programmable one-, two- and three-phase measurement transducer
- Measurement of voltage, current, power, power factor, frequency and energy
- Energy metering, 9 digits
- Measuring inputs 3x230(400)VAC, 5A
- Power supply: 18-60 or 90-260VDC/AC
- Outputs: 3 analogue 20mA, or 3 10VDC, 2 relays for alarms
- RS485 Modbus RTU
- CE, cURus, CSA

Energy management

Web server and datalogger



VMU-C EM

- Micro PC with datalogger function
- Web Server, Push and API Pull
- Modbus TCP Slave function
- Data display (charts and tables)
- Data export to HTML compatible with Excel and other spreadsheets
- 4GB internal memory, Back-up memory on micro SDHC and USB
- Energy analysis of each individual load
- Invoicing simulation
- Virtual meter with sum function
- VMU-W alarm management (e-mail or SMS)
- Power supply: 24VDC
- 1 RS485 for 32 Energy meters, 1 RS485 for VMU-M EM, RJ45 for Ethernet connection
- CE, cULus

3G Modem for VMU-C EM



VMU-W

- Dimensions: 2 DIN modules
- Installation: DIN-rail
- It allows to publish the data logger on the Web if no cable connectivity is available.
- Modem for VMU-C EM
- 3G network support: GSM, GPRS, EDGE, UMTS, HSPA
- Automatic dual band or quad band setting (850-900MHz, 1800-1900/2100MHz)
- VMU-C EM SMS management service
- Power supply: 24VDC
- CE, cULus

Modules for VMU-C EM



VMU-P EM

- Dimensions: 1 DIN module
- Installation: DIN-rail
- Connection to VMU-C EM, directly or through VMU-M EM, on RS485 for measurement and state acquisition
- Measuring inputs: Temperatures, PT100 or PT1000, 1 for current 0-20mA
- Power supply: from the local bus or from VMU-M EM
- Proprietary communication with VMU-C EM or VMU-M EM
- CE, cULus

Modules for VMU-C EM



VMU-O EM

- Dimensions: 1 DIN module
- Installation: DIN-rail
- Connection to VMU-C EM, directly or through VMU-M EM, on RS485 for measurement and state acquisition
- Power supply: from the local bus or from VMU-M EM
- 2 digital inputs
- 2 relay outputs
- Proprietary communication with VMU-C EM or VMU-M EM
- CE, cULus

Embedded aggregation server



VMU-Y EM

- 2-DIN size; DIN-rail mounting
- Multi-site monitoring management
- Power supply 24VDC ($\pm 20\%$)
- 2 USB ports (data /connection backup)
- 1 SD port (backup)
- Load profile management
- Data analysis and benchmark
- Data and event logging
- Customizable graphical synoptic
- All data exported in format compatible with Excel or other spread sheets
- Tariffs and contract management
- Alarms management
- Database replication from up to 10 VMU-C EM

Cloud solution for multi-site monitoring



Em²-Server

- Virtual machine for energy data management
- Multi-site monitoring management
- Flexible and scalable architecture
- VMware® technology compatibility
- Load profile management
- Data analysis and benchmark
- Data and event logging
- Customizable graphical synoptic
- All data exported in format compatible with Excel or other spread sheets
- Tariffs and contract management
- Alarms management
- Database replication from up to 100 VMU-C EM

OUR SALES NETWORK IN EUROPE

AUSTRIA - Carlo Gavazzi GmbH
Ketzergergasse 374, A-1230 Wien
Tel: +43 1 888 4112
Fax: +43 1 889 10 53
office@carlogavazzi.at

BELGIUM - Carlo Gavazzi NV/SA
Mechelsesteenweg 311, B-1800 Vilvoorde
Tel: +32 2 257 4120
Fax: +32 2 257 41 25
sales@carlogavazzi.be

DENMARK - Carlo Gavazzi Handel A/S
Over Hadstenvej 40, DK-8370 Hadsten
Tel: +45 89 60 6100
Fax: +45 86 98 15 30
handel@gavazzi.dk

FINLAND - Carlo Gavazzi OY AB
Petaksentie 2-4, FI-00630 Helsinki
Tel: +358 9 756 2000
Fax: +358 9 756 20010
myynti@gavazzi.fi

FRANCE - Carlo Gavazzi Sarl
Zac de Paris Nord II, 69, rue de la Belle
Étoile, F-95956 Roissy CDG Cedex
Tel: +33 1 49 38 98 60
Fax: +33 1 48 63 27 43
french.team@carlogavazzi.fr

GERMANY - Carlo Gavazzi GmbH
Pfnorstr. 10-14
D-64293 Darmstadt
Tel: +49 6151 81000
Fax: +49 6151 81 00 40
info@gavazzi.de

GREAT BRITAIN - Carlo Gavazzi UK Ltd
4.4 Frimley Business Park,
Frimley, Camberley, Surrey GU167SG,
Tel: +44 1 276 854 110
Fax: +44 1 276 682 140
sales@carlogavazzi.co.uk

ITALY - Carlo Gavazzi SpA
Via Milano 13, I-20020 Lainate
Tel: +39 02 931 761
Fax: +39 02 931 763 01
info@gavazziacbu.it

NETHERLANDS - Carlo Gavazzi BV
Wijkmeerweg 23,
NL-1948 NT Beverwijk
Tel: +31 251 22 9345
Fax: +31 251 22 60 55
info@carlogavazzi.nl

NORWAY - Carlo Gavazzi AS
Melkeveien 13, N-3919 Porsgrunn
Tel: +47 35 93 0800
Fax: +47 35 93 08 01
post@gavazzi.no

PORTUGAL - Carlo Gavazzi Lda
Rua dos Jerónimos 38-B,
P-1400-212 Lisboa
Tel: +351 21 361 7060
Fax: +351 21 362 13 73
carlogavazzi@carlogavazzi.pt

SPAIN - Carlo Gavazzi SA
Avda. Iparraguirre, 80-82,
E-48940 Leioa (Bizkaia)
Tel: +34 94 480 4037
Fax: +34 94 431 6081
gavazzi@gavazzi.es

SWEDEN - Carlo Gavazzi AB
V:a Kyrkogatan 1,
S-652 24 Karlstad
Tel: +46 54 85 1125
Fax: +46 54 85 11 77
info@carlogavazzi.se

SWITZERLAND - Carlo Gavazzi AG
Verkauf Schweiz/Vente Suisse
Sumpfstrasse 3,
CH-6312 Steinhausen
Tel: +41 41 747 4535
Fax: +41 41 740 45 40
info@carlogavazzi.ch

OUR SALES NETWORK IN THE AMERICAS

USA - Carlo Gavazzi Inc.
750 Hastings Lane,
Buffalo Grove, IL 60089, USA
Tel: +1 847 465 6100
Fax: +1 847 465 7373
sales@carlogavazzi.com

CANADA - Carlo Gavazzi Inc.
2660 Meadowvale Boulevard,
Mississauga, ON L5N 6M6, Canada
Tel: +1 905 542 0979
Fax: +1 905 542 22 48
gavazzi@carlogavazzi.com

MEXICO - Carlo Gavazzi Mexico S.A. de C.V.
Calle La Montaña no. 28, Fracc. Los Pastores
Naucalpan de Juárez, EDOMEX CP 53340
Tel & Fax: +52.55.5373.7042
mexicosales@carlogavazzi.com

BRAZIL - Carlo Gavazzi Automação Ltda.Av.
Av. Francisco Matarazzo, 1752
Conj 2108 - Barra Funda - São Paulo/SP
Tel: +55 11 3052 0832
Fax: +55 11 3057 1753
info@carlogavazzi.com.br

OUR SALES NETWORK IN ASIA AND PACIFIC

SINGAPORE - Carlo Gavazzi Automation
Singapore Pte. Ltd.
61 Tai Seng Avenue
#05-06 UE Print Media Hub
Singapore 534167
Tel: +65 67 466 990
Fax: +65 67 461 980
info@carlogavazzi.com.sg

MALAYSIA - Carlo Gavazzi Automation
(M) SDN. BHD.
D12-06-G, Block D12,
Pusat Perdagangan Dana 1,
Jalan PJU 1A/46, 47301 Petaling Jaya,
Selangor, Malaysia.
Tel: +60 3 7842 7299
Fax: +60 3 7842 7399
sales@gavazzi-asia.com

CHINA - Carlo Gavazzi Automation
(China) Co. Ltd.
Unit 2308, 23/F.,
News Building, Block 1, 1002
Middle Shennan Zhong Road,
Shenzhen, China
Tel: +86 755 83699500
Fax: +86 755 83699300
sales@carlogavazzi.cn

HONG KONG - Carlo Gavazzi
Automation Hong Kong Ltd.
Unit 3 12/F Crown Industrial Bldg.,
106 How Ming St., Kwun Tong,
Kowloon, Hong Kong
Tel: +852 23041228
Fax: +852 23443689

OUR COMPETENCE CENTRES AND PRODUCTION SITES

DENMARK - Carlo Gavazzi Industri A/S
Hadsten

MALTA - Carlo Gavazzi Ltd
Zejtun

ITALY - Carlo Gavazzi Controls SpA
Belluno

LITHUANIA - Uab Carlo Gavazzi Industri
Kaunas
Kaunas

CHINA - Carlo Gavazzi Automation
(Kunshan) Co., Ltd.
Kunshan

HEADQUARTERS

Carlo Gavazzi Automation SpA
Via Milano, 13 - I-20020
Lainate (MI) - **ITALIA**
Tel: +39 02 931 761
info@gavazziautomation.com



CARLO GAVAZZI
Automation Components

Energy to Components!

www.gavazziautomation.com

